

VOR/DME IDA 113.85 Chan 85 (Y)	APP CRS 016°	Rwy Idg TDZE Apt Elev	3900 4858 4858
---	------------------------	-----------------------------	---

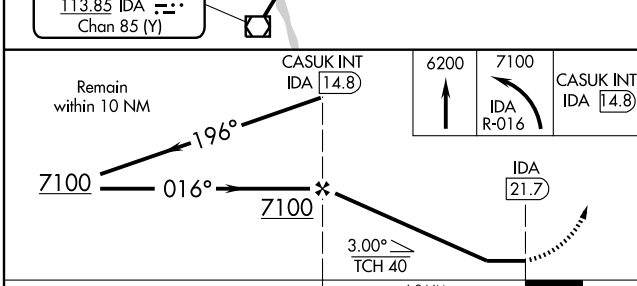
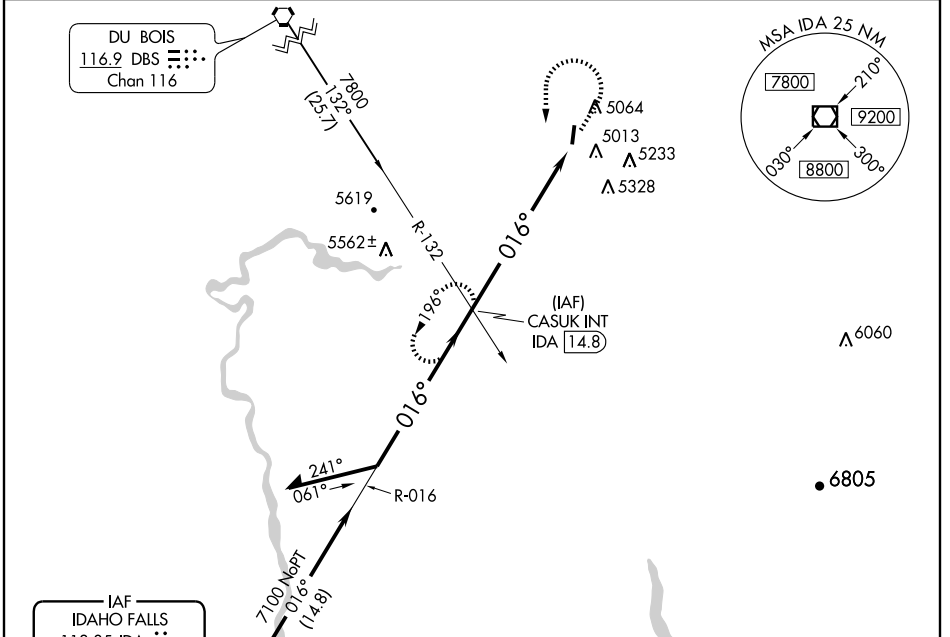
VOR RWY 35

REXBURG-MADISON COUNTY (R.X.E)

NA If local altimeter setting not received, use Idaho Falls Rgnl altimeter setting minima.

MISSED APPROACH: Climb to 6200 then climbing left turn to 7100 via IDA R-016 to CASUK INT/IDA 14.8 DME and hold.

ASOS 135.075	SALT LAKE CENTER 128.35 239.25	UNICOM 122.8 (CTAF)
------------------------	--	-------------------------------



ELEV 4858	D	TDZE 4858
-----------	----------	-----------

REIL Rwy 35
MIRL Rwy 17-35

FAF to MAP 6.9 NM	Knots	60	90	120	150	180
	Min:Sec	6:54	4:36	3:27	2:46	2:18

CATEGORY	A	B	C	D
S-35	5640-1 782 (800-1)	5640-1¼ 782 (800-1¼)	5640-2¼ 782 (800-2¼)	5640-2½ 782 (800-2½)
CIRCLING	5640-1 782 (800-1)	5640-1¼ 782 (800-1¼)	5640-2¼ 782 (800-2¼)	5660-2½ 802 (900-2½)
IDAHO FALLS RGNL ALTIMETER SETTING MINIMUMS				
S-35	5820-1¼ 962 (1000-1¼)	5820-1½ 962 (1000-1½)	5820-3	962 (1000-3)
CIRCLING	5820-1¼ 962 (1000-1¼)	5820-1½ 962 (1000-1½)	5820-3	962 (1000-3)

NW-1, 28 JUN 2012 to 26 JUL 2012

NW-1, 28 JUN 2012 to 26 JUL 2012