

RNAV (GPS) RWY 35

REXBURG-MADISON COUNTY (R.X.E)

APP CRS 351°	Rwy Idg 3900
	TDZE 4858
	Apt Elev 4858

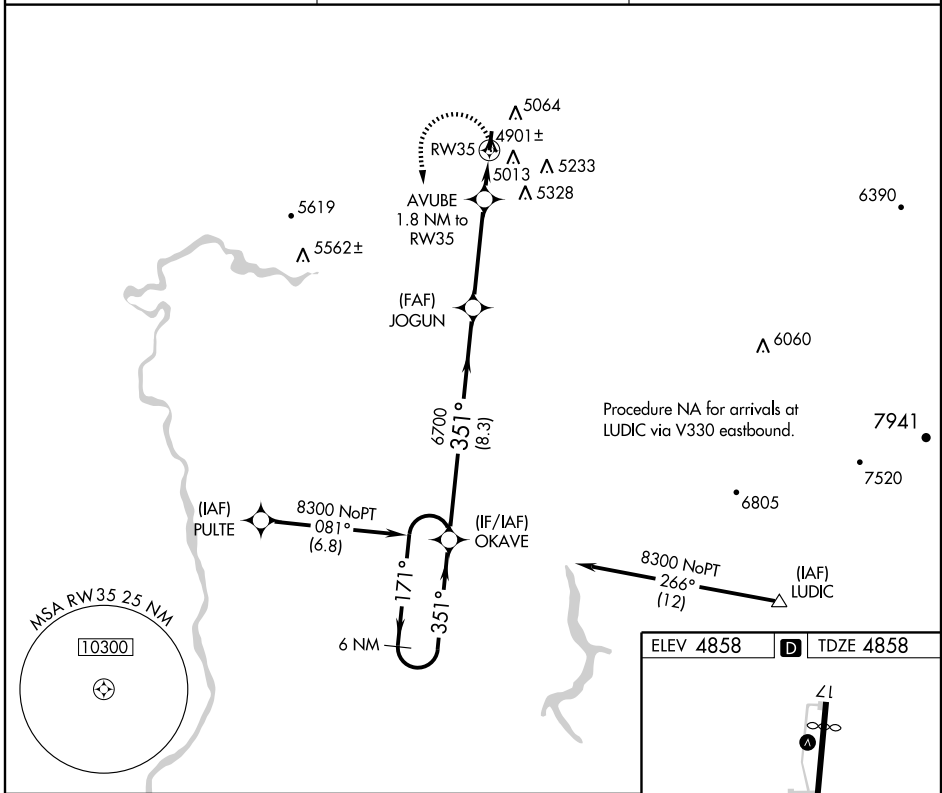
▼ If local altimeter setting not received, use Idaho Falls Rgnl altimeter setting and increase all MDAs 80 feet.
▲ When VGSI inop, procedure NA at night.
 DME/DME RNP-0.3 NA.

MISSED APPROACH: Climbing left turn to 8300 direct OKAVE and hold.

ASOS
135.075

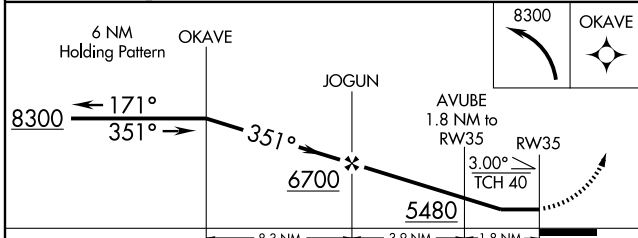
SALT LAKE CENTER
128.35 239.25

UNICOM
122.8 (CTAF) 0

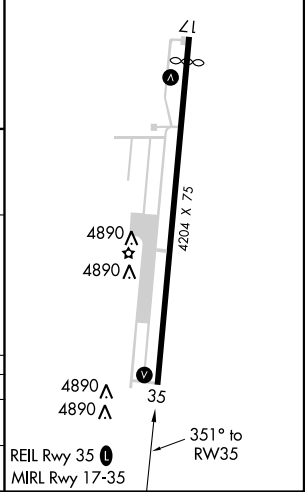


NW-1, 28 JUN 2012 to 26 JUL 2012

NW-1, 28 JUN 2012 to 26 JUL 2012



ELEV 4858 **D** TDZE 4858



CATEGORY	A	B	C	D
LNVA MDA	5260-1	402 (500-1)	5260-1¼	402 (500-1¼)
CIRCLING	5380-1 522 (600-1)	5580-1 722 (800-1)	5580-2 722 (800-2)	5620-2½ 762 (800-2½)